

Breathe Easy BRD Detection & Treatment Kit



Injectable
Baytril® 100
(enrofloxacin)
Right the first time®



Calf Health Scoring Criteria

0

1

2

3

100°–100.90°

101°–101.90°

102°–102.90°

103° and up

Rectal temperature

Cough

None

Induced single cough

Induced repeated or occasional spontaneous cough

Repeated spontaneous cough

Nasal discharge

Normal serous discharge

Small amount of unilateral cloudy discharge

Bilateral, cloudy or excessive mucus discharge

Copious bilateral mucopurulent discharge



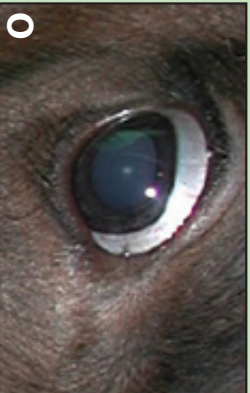
Eye scores

Normal

Small amount of ocular discharge

Moderate amount of bilateral discharge

Heavy ocular discharge



Ear scores

Normal

Ear flick or head shake

Slight unilateral droop

Head tilt or bilateral droop



Protect your herd with the Breathe Easy BRD Detection & Treatment Kit



A study conducted by Dr. Sheila McGuirk of the University of Wisconsin-Madison School of Veterinary Medicine revealed to the dairy industry the damage Bovine Respiratory Disease (BRD) can do to individual heifers and entire operations. As a response, Dr. McGuirk and her colleagues set out to develop a system that would make diagnosing and treating BRD easy and effective. The result, presented in partnership with Bayer Animal Health, is the Breathe Easy BRD Detection & Treatment Kit.

The Breathe Easy BRD Detection & Treatment Kit is:

- Simple: easy to follow, perform and interpret.
- Specific: developed for early identification of BRD in dairy calves and heifers.
- Supportive: promotes regular screening to optimize the health of your calves.

How to use the Breathe Easy BRD Detection & Treatment Kit Scoring Chart

Developed with guidance from Dr. Sheila McGuirk at the University of Wisconsin-Madison School of Veterinary Medicine, the Breathe Easy BRD Detection & Treatment Kit Scoring Chart was designed to help you screen and diagnose BRD. Left untreated, BRD can quickly cause respiratory permanent lung damage to infected replacement heifers. This system makes controlling BRD and protecting your herd simple.

- Start screening calves at 3–4 weeks of age.
- Screen twice a week if 30% or more of calves show positive signs of BRD.
- Complete a pre-weaning screen on all calves.
- After weaning, screen every calf before moving to a group pen.
- Additional scoring cards can be found at:

http://www.vetmed.wisc.edu/fapm/fapmtools/8calf/calf_respiratory_scoring_chart.pdf



Extra-label use of this drug in food-producing animals is prohibited.

A step-by-step process for diagnosing BRD

Initiate screening on 3- to 4-week-old calves. If 30% or more of calves show positive signs of BRD, screening twice weekly is recommended.

Additional screening of calves that are moved into group pens is recommended.

STEP 1 ▶ Record calf's identification number and age in the appropriate columns on the Calf Respiratory Health Scoring Chart.

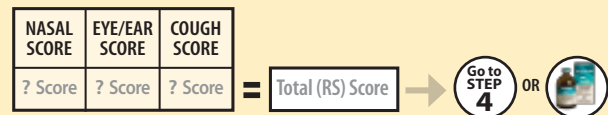
From outside the pen, inspect calf for these signs of BRD:

STEP 2 ▶

- Nasal Discharge: compare calf's nasal discharge to the nasal discharge photographs on the Calf Respiratory Health Scoring Chart.
- Ocular Discharge: compare calf's eye discharge to the eye score photographs on the Calf Respiratory Health Scoring Chart.
- Ear Score: compare calf's ear appearance to the ear score photographs on the Calf Respiratory Health Scoring Chart.
- Cough: observe calf for presence of cough and compare to the descriptions on the Calf Respiratory Health Scoring Chart.

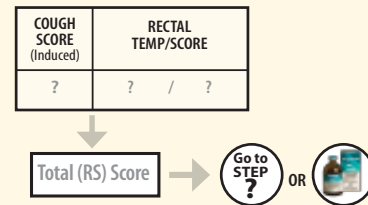
STEP 3 ▶ **Determine total respiratory score (RS) to this point:**

- Score of 4 or lower: proceed to item #4 for further screening.
- Score of 5 or higher: treat with Baytril® 100 (enrofloxacin) per veterinary and label instructions.



STEP 4 ▶ **From inside the pen, inspect the calf for these signs of BRD:**

- Rectal temperature: take rectal temperature and record score according to the Calf Respiratory Health Scoring Chart.
- Cough: Squeeze the calf's trachea and shake to see if cough is induced. Record the score according to the Calf Respiratory Health Scoring Chart.



STEP 5 ▶ **Determine total respiratory score (RS) to this point:***

- Score of 3 or less: calf is normal.
- Score of 4: observe and rescreen within 1 week.
- Score of 5 or more: treat calf with Baytril 100 per veterinary and label instructions.

STEP 6 ▶ After screening, scoring and treating each calf, mark each individual pen with a designated pen marker (zip tie, etc.).

STEP 7 ▶ All treated calves should be rescreened 3 days after treatment.

STEP 8 ▶ If the calf scores normal (score of 3 or less) at step 7, treatment is complete. Snip the tail off of the zip tie marker.

*Screening is not a substitute for veterinary care and diagnosis. Consult your veterinarian for further tips on BRD diagnosis.

Do not use in female dairy cattle 20 months of age or older. Use of enrofloxacin in this class of cattle may cause milk residues. Cattle intended for human consumption must not be slaughtered within 28 days from the last treatment. Do not use in calves to be processed for veal.

Injectable
Baytril® 100
(enrofloxacin)
Right the first time™

